



U • O N B O A R D

精選餐飲美食及優惠 INFLIGHT GOURMET DINING AND DEALS | WINTER 2023



歡迎使用 Visa/Mastercard 信用卡/八達通支付
Visa/Mastercard credit card/Octopus Card payment are accepted





港式經典雞蛋仔 適合素食者

金黃色蜂巢狀餅底，外層香脆、入口軟糯、蛋味濃郁，享受多層次滋味。

Classic HK Style Egg Waffle Vegetarian

Featuring a crispy, golden honeycomb-shaped crust, this delicacy boasts a chewy interior with an enticing egg flavour, delivering a multi-layered sensation.

① 原味 Original

HKD 38 嚐鮮價 Promotional Price

② 朱古力味 Chocolate

HKD 45 嚐鮮價 Promotional Price

現購買以上機上精選餐點並加購飲品*，即可享港幣5元折扣優惠。
Enjoy HKD 5 discount when purchasing above inflight selected meals with a drink*.



*蒟蒻珍珠奶茶、醒神熱飲、樽裝水及汽水酒除外。 *Exclude konjac bubble tea, hot drinks, bottled water and sparkling wine.



「香港快運 x 圓圓小姐」蒟蒻珍珠奶茶 適合素食者

喝一口限定聯名蒟蒻珍珠奶茶，享受濃厚的盧哈娜奶茶與蒟蒻珍珠的絕妙搭配。

"HK Express x Lady BoBo" Konjac Bubble Tea Vegetarian

Indulge in the delightful fusion of aromatic Ruhana milk tea and konjac bubbles, this pairing introduces a unique texture to your in-flight beverage.

HKD 38 嚐鮮價 Promotional Price



「飛越天際」薄餅套餐 適合素食者 (附Qoo果汁、填色畫冊及木顏色筆)

精心製作、口感清新的意式薄餅，配上酸甜清爽的番茄、拉絲水牛芝士和芳香的羅勒葉。
另外，套餐更附送清甜白提子汁、「飛越天際」填色畫冊及木顏色筆，讓小乘客將「飛」一般空中滋味帶回家！

“Fly to the Sky” Pizza Combo Vegetarian (includes Qoo juice, colouring book and colour pencils)

The pizza features a crispy crust topped with a tangy-sweet tomato sauce, melted mozzarella cheese, and aromatic basil leaves. Complementing this culinary treat, the combo provides a pack of delectable white grape juice, a “Fly to the Sky” colouring book and colour pencils tailored for our younger guests, ensuring they carry a memento of this exceptional in-flight experience home.

HKD 78



①

意式波隆那牛肉醬 長通粉

Penne Bolognese

HKD 58

②

香濃蕃茄醬長通粉

 適合素食者

Penne with Classic
Tomato Sauce

 Vegetarian

HKD 58

現購買以上機上精選餐點並加購飲品^{*}，即可享港幣5元折扣優惠。
Enjoy HKD 5 discount when purchasing above inflight selected meals with a drink^{*}.



* 蒟蒻珍珠奶茶、醒神熱飲、樽裝水及汽泡酒除外。 *Exclude konjac bubble tea, hot drinks, bottled water and sparkling wine.

即食精選
INSTANT SPECIALS

精美零食
SNACKS





農心辛辣杯麵
Nong Shim Shin Ramen Cup Noodles

HKD 30



合味道杯麵海鮮味
Nissin Cup Noodles Seafood Flavour

HKD 30



出前一丁杯麵麻油味
Demaec Iccho Cup Sesame Oil Flavour

HKD 30



公仔碗麵麻油上素味
Doll Bowl Noodle Vegetarian Flavour with Sesame Oil

HKD 30

現購買以上機上精選餐點並加購飲品*, 即可享港幣5元折扣優惠。
Enjoy HKD 5 discount when purchasing above inflight selected meals with a drink*.



卡樂B熱浪薯片25克
Calbee Hot And Spicy Flavoured
Potato Chips 25g

HKD 15



卡樂B燒烤味薯片25克
Calbee BBQ Flavoured
Potato Chips 25g

HKD 15



多樂脆芝士味粟米片31.8克
Doritos Nacho Cheese Flavored
Tortilla Chips 31.8g

HKD 15



固力果沙律百力滋餅乾條69克
Glico Salad Pretz Biscuit Stick 69g

HKD 25



哈瑞寶金熊雜果橡皮糖80克
Haribo Goldbear Gummy 80g

HKD 25



明治青提味朱古力橡皮糖53克
Meiji Muscat Gummy Chocolate 53g

HKD 20

* 蒟蒻珍珠奶茶、醒神熱飲、樽裝水及汽水酒除外。 *Exclude konjac bubble tea, hot drinks, bottled water and sparkling wine.



清涼飲品 SOFT DRINKS



「可口可樂」汽水330毫升
"Coca-Cola" 330ml

HKD 25



無糖「可口可樂」汽水330毫升
"Coca-Cola" No Sugar 330ml

HKD 25



「雪碧」檸檬青檸味汽水330毫升
"Sprite" Lemon-Lime Flavoured
Soda 330ml

HKD 25



「Minute Maid」「酷兒」白提子汁
飲品200毫升
"Minute Maid" "Qoo" White Grape
Juice Drink 200ml

HKD 20



「淳。茶舍」大紅袍烏龍茶飲料（無糖）
250毫升
"Authentic Tea House" Dahongpao
Oolong Tea Beverage (No Sugar) 250ml

HKD 20



「飛雪」礦物質水250毫升
"Bonaqua" Mineralized Water 250ml

HKD 10



醒神熱飲 HOT DRINKS



意大利 Lavazza 咖啡
Lavazza Coffee

HKD 40



Saile & Sabga 熱朱古力
Saile & Sabga Hot Chocolate

HKD 40



雀巢咖啡® Café Collection
意大利泡沫咖啡
NESCAFÉ® Café Collection
Cappuccino Instant Coffee Mix

HKD 20



捷榮普洱茶
Tsit Wing Puer Tea

HKD 20



捷榮玄米綠茶
Tsit Wing Brown Rice Green Tea

HKD 20



捷榮鐵觀音茶
Tsit Wing Tieguanyin Chinese Tea

HKD 20

酒精飲品
ALCOHOLIC DRINKS



酒精飲品只售予18歲或以上人士 Alcoholic beverages shall only be sold to persons who are 18 years of age or older

新登場
NEW



波特嘉詩人普羅賽柯汽酒200毫升
Il VINO dei Poeti Prosecco DOC
Spumante Brut Bottega 200ml

HKD 68

新登場
NEW



鬼佬拉格啤酒330毫升
GweiLo Lager 330ml

HKD 50



Somersby 蘋果酒330毫升
Somersby Apple Cider 330ml

HKD 45



朝日啤酒330毫升
Asahi Beer 330ml

HKD 45



hEROES啤酒330毫升
hEROES Beer Co BEER 330ml

HKD 45



青島啤酒330毫升
TsingTao Beer 330ml

HKD ~~45~~ 40

優惠價 Special Discount

香港快運精選商品

HK EXPRESS EXCLUSIVE PRODUCTS



回力飛機啫喱筆

Gel Pen with Pullback Plane
HKD 68



一枝啫喱筆兩種功能，帶領各位寫出「飛越天際」的夢想。啫喱筆上的飛機可以獨立折開，只須往後一拉便可自動向前滑行；配上讓你書寫流暢順滑的啫喱筆芯，是一款送禮自用皆宜的趣味文具。

Soar high with your dreams using this unique "Fly High" gel pen. Its detachable pullback plane is designed for independent play: simply pull back, release, and watch it glide forward. With smooth gel ink, this pen is the perfect treat for yourself or a thoughtful gift for friends.

香港快運 x Moleskine 筆記簿 HK Express x Moleskine Notebook HKD 280



機上限定發售的香港快運 x Moleskine 筆記簿，優質防水硬殼封面印有最新A321neo飛機及香港快運標誌，配合耐磨圓角設計，適合紀錄飛行旅程和旅途的每個難忘時刻。無論是寫下行程安排還是描繪當地迷人風景，小巧易攜的A5尺寸和FSC認證的無酸紙張，讓你將隨心描繪或寫下回憶，穩妥保存。

Explore the skies with the exclusive HK Express x Moleskine notebook, featuring a sleek, waterproof hardcover embellished with the latest A321neo aircraft and the HK Express logo. Its durable, rounded-corner design makes this notebook your perfect companion for recording every memorable moment of your journey, whether in-flight or on vacation. Ideal for everything from jotting down itineraries to sketching breathtaking vistas, its compact A5 size and FSC-certified, acid-free paper ensure you can document each experience with ease, keeping your memories safe for years to come.



便攜式搖粒絨毛毯 Portable Fleece Blanket (100 x 150cm) HKD 170

繡上品牌標誌的香港快運毛毯，讓你在旅途中時刻感覺溫暖。毛毯採用充滿時尚感的搖粒絨布質製作，配上鮮艷醒目的紫色縫邊，觸感柔軟且保暖，為飛行過程帶來一點舒適感。它亦可簡單折疊成一個舒適的枕頭，輕巧便攜，是每位旅行愛好者必備的出行用品。

Stay warm and stylish with the HK Express blanket, your essential companion for every adventure. Crafted from soft fleece with eye-catching purple edging, this blanket provides unmatched softness and warmth, ensuring maximum comfort throughout your journey. Featuring an embroidered HK Express logo, it easily folds and zips into a cosy pillow. Lightweight and portable, this blanket is the perfect travel accessory for every travel enthusiast.



另有免稅商品可供選購，請參閱椅袋內的U.Shop。

Explore range of Duty Free products with our U.Shop catalogue in your seat pocket.

體驗無塑的機上餐飲，邁向綠色未來！

Take Off To A Greener Future!

Say Hello to Eco-Friendly In-flight Dining!



無塑膠和無植物性塑料
Plastic and bio-plastic free



真正可持續的包裝
Truly sustainable packaging



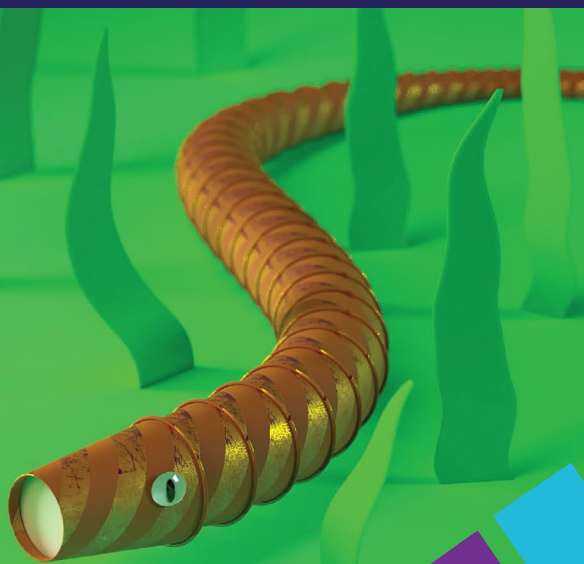
負責任來源
Responsibly sourced



環保油墨定制產品
Custom eco-ink branding



家庭可堆肥和回收利用
Home compostable & recyclable



Sustainabl. Planet 與香港快運攜手合作，共建更美好的世界

Sustainabl. Planet & HK Express A Partnership For A Better World





九州鐵路周遊券

JR KYUSHU RAIL PASS



福岡、熊本、鹿兒島及長崎 Fukuoka, Kumamoto, Kagoshima & Nagasaki

北部九州 Northern Kyushu		南部九州 Southern Kyushu		
3天券 3-day pass 成人 Adult	5天券 5-day pass 成人 Adult	3天券 3-day pass 成人 Adult		
JPY 12,000	JPY 15,000	JPY 10,000		
全九州 All Kyushu				
3天券 3-day pass 成人 Adult	5天券 5-day pass 成人 Adult	7天券 7-day pass 成人 Adult		
JPY 20,000	JPY 22,500	JPY 25,000		

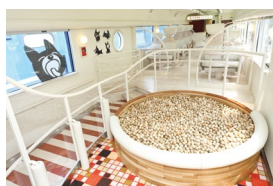
商品交易以港幣結算。有關最新匯率及港幣價格請向機艙服務員查詢。兒童 (6歲-11歲) 可享半價優惠, 6歲以下兒童費用全免。
Products are transacted in Hong Kong Dollars (HKD). Please contact our cabin crew for the latest exchange rates and HKD prices.
Free of charge for Children under the age of 6; those aged 6-11 shall enjoy half price.

乘搭各具特色的觀光列車, 體驗與別不同的九州!

Travel around the unique Kyushu area by using JR railway networks!



由布院之森



阿蘇男孩號車廂內



指宿之玉手箱



雙星4047

請追蹤JR九州的Facebook或Instagram專頁以了解最新情報吧!



JR九州旅行資訊 for HK



jrkyushu_worldinfo

① 購買及兌換方法 / How to Purchase and Exchange the Ticket

如欲購買,
請聯絡機艙服務員
Please purchase from
our cabin crew

持已蓋章的收據和護照到

• 北部九州車票 - 博多站/長崎站/熊本站

• 南部九州車票 - 熊本站/鹿兒島中央站

• 全九州車票 - 以上所有兌換櫃檯

Take the STAMPED receipt and your passport to the following counters

• Northern Kyushu Passes - Hakata Station / Nagasaki Station / Kumamoto Station

• Southern Kyushu Pass - Kumamoto Station / Kagoshima-Chuo Station

• All Kyushu Passes - All counters above

條款及細則

僅限於持有短期停留簽證的旅客才可以使用。兌換期限為購買日起三個月內。可以自由乘搭JR九州的普通列車, 快速列車, 特快列車和新幹線的指定座及自由座。退票僅限於搭乘的班機內辦理。所有周遊券只可以於指定的櫃檯進行兌換, 周遊券於非指定的櫃檯均不能兌換及進行退票。每次兌換周遊券時, 各兌換櫃檯須收取收據以作紀錄, 故不同種類的周遊券必須分開獨立交易完成。指定座之預約次數不限。

Conditions of Use

This pass is only available for travelers holding a temporary visa. The pass can be exchanged within 3 months from the purchased date. Pass holders are eligible to ride on both reserved and non-reserved seats on the Kyushu Shinkansen, limited express, rapid and ordinary trains. Refunds will only be given on flight of purchase. Please be aware that the exchange ticket counters vary according to rail pass type. No exchanges/refunds will be given if receipts are taken to the incorrect exchange counters. Northern, Southern and All Kyushu Passes cannot be purchased in one transaction as the receipt can only be exchanged at designated counters. The number of reservation seats allowed will be unlimited.

京成電鐵優惠車票 SKYLINER VALUE TICKET



東京 Tokyo

單程 Single Journey

低至

88折
Up to 12% off

成人 Adult JPY ~~2,570~~

JPY 2,300

兒童 Child JPY ~~1,290~~

JPY 1,150

商品交易以港幣結算。有關最新匯率及港幣價格請向機艙服務員查詢。

兒童 (1歲-6歲) 如需佔座必須購買兒童優惠車票，不佔座則費用全免。

每位成人能最多陪同兩名不佔座之兒童乘車。

1歲以下兒童費用全免。

Products are transacted in Hong Kong Dollars (HKD). Please contact our cabin crew for the latest exchange rates and HKD prices.

Children aged 1-6 occupying seats must purchase children discounted tickets.

Those who are not occupying seats can be exempted (Free up to two children per adult). Aged below 1 are free of charge.

立即於機上購買Skyliner京成電鐵單程車票，由成田機場特快直達東京市區！
The fastest way to central Tokyo - Buy your discounted Keisei Skyliner ticket onboard now!



京成電鐵 Skyliner



客艙 Cabin



轉插器 AC adaptor



座位 Seat



行李存放處 Baggage storage

① 購買及兌換方法 / How to Purchase and Exchange the Ticket

① 如欲購買，請聯絡機艙服務員
Please purchase from our cabin crew

② 持已蓋章之收據到Skyliner & Keisei Information Center 兌換車票
Please take the STAMPED receipt to the Skyliner & Keisei Information Center or ticket sales counters and redeem your Skyliner ticket

兌換處 Where to redeem

① 成田機場第2・第3航站的 Skyliner & Keisei Information Center

Skyliner & Keisei Information Center at Narita Airport Terminal 2・3 Station

※ Skyliner & Keisei Information Center 開放時間為：07:00 - 21:00

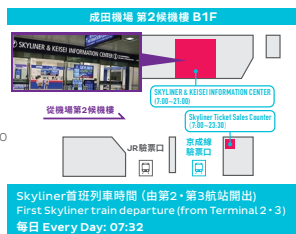
Opening hours for Skyliner & Keisei Information Center: 07:00 - 21:00

② 成田機場第1或第2・第3航站車站售票處

Skyliner ticket sales counters at Narita Airport Terminal 1 Station or Narita Airport Terminal 2・3 Station

※ 京成電鐵車票售票處服務時間為：07:00 - 23:30

Opening hours for Skyliner ticket sales counters: 07:00 - 23:30

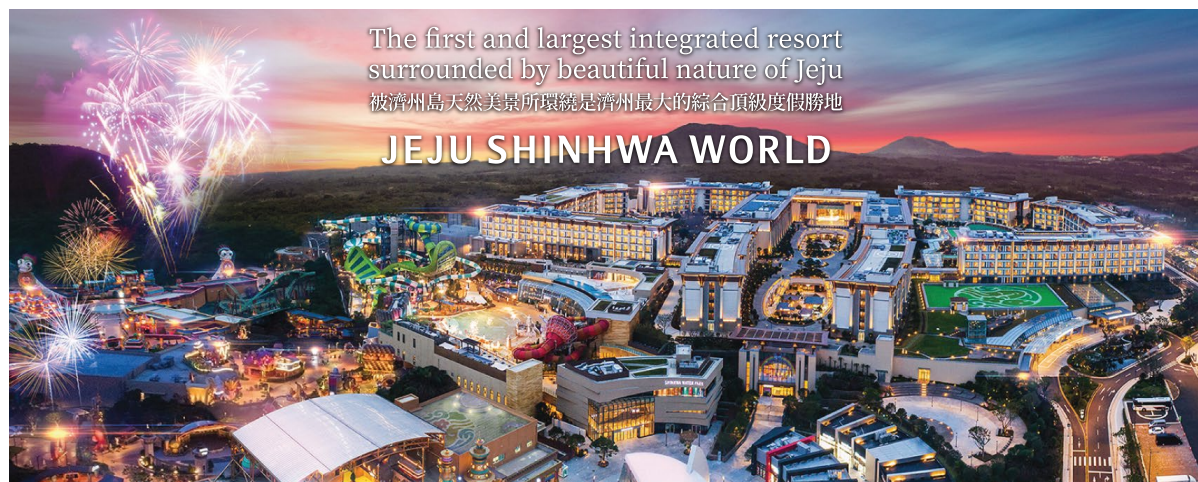


條款及細則

車票只於發售當日有效。只適用於由成田機場單向前往東京市區之列車。車票不適用於由東京市區前往成田機場的回程列車使用。車票不適用 Evening Liner 及 Morning Liner 列車。
只於 22:00 前抵達成田的航班機內發售。折扣車票只適用於 6-11 歲的小童 (亦適用於 12 歲之小學學生)。

Conditions of Use

Ticket is valid for the day of sold and Skyliner train from Narita Airport to Tokyo only. This ticket cannot be used for Skyliner train for Narita Airport. This ticket cannot be used for Evening Liner and Morning Liner. Only available on flights arriving NRT from HKG before 22:00. Discounted price is only eligible for Children aged 6-11 (including 12 years old elementary school students).



The first and largest integrated resort
surrounded by beautiful nature of Jeju
被濟州島天然美景所環繞是濟州最大的綜合頂級度假勝地

JEJU SHINHWA WORLD

JSW is located in Andeok-myeon, Seogwipo, Jeju
44km from Jeju Int' airport
1hr 10min by Bus no.151 / 44 min by taxi or car

濟州神話世界位於濟州特別自治道西歸浦市安德面
從濟州機場到濟州神話世界 - 44 公里
乘坐 151 路巴士 大約1 小時 10 分鐘
乘坐出租車或汽車約 44 分鐘



Tourist spots near JSW 濟州神話世界附近的熱門旅遊景點

- O'sulloc Tea Museum | 噴雪綠茶博物館
- Hallasan Mountain | 漢拏山
- Sanbangsan Mountain | 山房山
- Seogwipo Maeil Olle Market | 西歸浦每日偶來市場
- Innisfree Jeju House | 悅詩風吟濟州之家

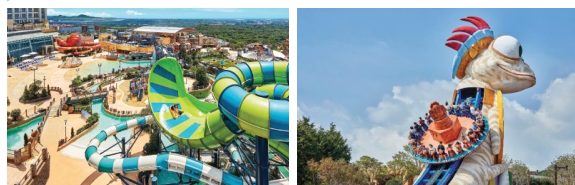
5 STAR ACCOMODATIONS | 五星住宿



Four exceptional five-star accommodations await, providing luxurious comfort like never before, accompanied by impeccable services.

四家卓越的五星級酒店, 為您提供前所未有的豪華舒適和無可挑剔的優質服務。

ATTRACTIONS | 暢玩樂園



Delight in a world of excitement at Jeju Shinhwa World's water park and theme park, filled with unforgettable adventures.

在濟州神話世界的水上樂園和主題公園探索驚險刺激的冒險世界, 體驗難以忘懷的精彩歡樂。

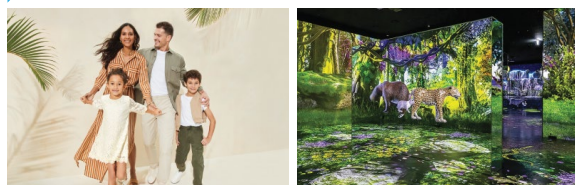
ALL DINING | 無盡美饌



Outstanding flavors meet an unforgettable ambience with over 40 different restaurants to satisfy everyone's palate and expectation

超過 40 家不同風味的餐飲選擇, 出眾的風味與令人難忘的氛圍相得益彰, 可滿足每個人挑剔的味蕾和盡享至臻美味的盛綻尖的幸福。

SHOP & JOY | 購物與娛樂



Enhance your experience in Jeju with premium shopping and variety of events for all generations, adding color and joy

全天候的樂園, 透過享受頂級購物的樂趣和各種適合各年齡層的精彩活動提升您在濟州島的渡假體驗, 增添更多色彩及歡樂。

Enjoy the diverse array of entertainment prepared at Jeju Shinhwa World with exclusive discounts!
For more information on exclusive benefits, please request a voucher from our cabin crew.

以獨家優惠折扣享受濟州神話世界為您準備的各種精彩娛樂活動!
欲知更多專享禮遇的訊息, 請向機艙服務員索取優惠券。



Conditions are subject to change without notice due to weather conditions, maintenance, or unforeseen circumstances.
Please check the official website or contact Jeju Shinhwa World for any updates or changes prior to your visit.

由於天氣狀況、設施維護或不可預期的情況, 優惠條款如有變更, 恕不另行通知。
在您造訪濟州神話世界之前, 請先查看官方網站或和我們聯繫以獲取最新資訊。

Lady BOBO

圓圓小姐

This drink is tea-licious!



ladybobo.tea



銅鑼灣 | 利園山道11號 | 11 Lee Garden Rd., Causeway Bay, Hong Kong
深水埗 | 西九龍中心8樓 | 8F Dragon Center, Sham Shui Po, Hong Kong
旺角 | 山東街50號 | Shantung St., Mong Kok, Hong Kong



+852 6886 2131

ladybobotea.com

TSINGTAO

TSINGTAO



飲杯青島 開心香港
Cheers Tsingtao Happy Hong Kong

電話號碼卡實名登記已落實，
由於部分地區限制，香港在
香港本地使用請完成實名登記。
Real name Registration for Club Sim card has
been implemented. As this is a pre-paid
unlimited service, you must provide your
Real name Registration if you wish to use
the card locally in Hong Kong.

HK\$ 88/7日*
day travel data

旅遊 CLUB Sim
TRAVEL

中國內地 日本 南韓
新加坡 泰國 等15個亞太地區
Mainland China, Japan, South Korea, Singapore, Thailand and other Asia-Pacific destinations

留住Club Sim,
下次再用
Keep the SIM card
for your next trip

7日可以
分開用*
The 7 days can be
used separately

用足
24小時*
Full 24 hours
of data

全新用戶，送2日*
New users can get 2 days of Data roaming each

旅遊 Club Sim

Travel Club Sim



優惠
Offer

7日4G盡情上網* **HKD 88**
7 days hassle-free 4G travel data*

適用於中國 - 內地、澳門、台灣地區、日本、南韓、
泰國、新加坡、馬來西亞及越南等多個亞太地區

Applicable to China - Mainland, Macau, Taiwan regions, Japan, South Korea, Thailand, Singapore, Malaysia, Vietnam and more APAC destinations.

- 用足24小時*
Full 24 hours of data+.
- 全新用戶，送2日* (共9日)!
Free 2 days for new Club Sim customers* (Total 9 days)!
- 用唔囉嘅日數，留番下次再用*
You can use any unused day(s) on your next trip!
- 其後旅遊數據低至每日 HK\$11.1
Get extra travel data from just HK\$11.1 /day.

旅遊 Club Sim 及其優惠受條款及細則約束，詳情請參閱 <https://www.clubsim.com.hk/clsweb/tcs>
Travel Club Sim and Offer were bounded by terms and conditions, please visit <https://www.clubsim.com.hk/clsweb/tcs> for details.

*每日旅遊數據用量到達500MB後，上網速度將被調整至不低於256kbps。*當你到達指定漫遊地區時，數據漫遊將會自動啟動。並於啟動後24小時有效。收費以每日(24小時)每個漫遊地區計算。如於同一日則於指定漫遊地區，將會扣除2日之收費。*於有效期內使用。有效期間請見封套。*2日數據漫遊包括在Club Sim免費組合內。每位合資格Club Sim會員只可享有此組合一次。

*When daily travel data usage reaches 500MB, the Club Sim data speed will be set up to 256kbps. *Your Data roaming pack will be activated automatically on your arrival at the applicable destination and will remain valid for 24 hours after activation. Charges are calculated per one day (24 hours) per each applicable destination. Two days of charges will be deducted if you visit two applicable destinations within 24 hours. *Must be used within validity period as shown on the packing. *Two days of extra Data roaming pack will be part of Club Sim's Welcome Pack. Each eligible member of Club Sim is entitled to the Welcome Pack one time only.

圖片僅供參考，一切以實物為準。

csf.

DISCOVER HONG KONG
Tourist SIM Card 香港任縱橫

香港、澳門
香港、澳門
香港、澳門

Get 3GB mobile data in HK & Macau, free Wi-Fi service and unlimited voice minutes in HK for first 5 days.
+ \$48/100MB/s usage when travelling in mainland China & Taiwan.
+ \$30 usable store-value

Get 3GB mobile data in HK & Macau, free Wi-Fi service and unlimited voice minutes in HK for first 5 days.
+ \$48/100MB/s usage when travelling in mainland China & Taiwan.
+ \$30 usable store-value

升級至 10天
Upgrade to 10 Days
12GB

限定優惠 In-flight discount

78
HKD

香港発見・観光旅行者用 SIM カード 디스커버 홍콩 여행자 SIM카드 香港任縱橫儲值卡 Discover Hong Kong Tourist SIM Card

- 升級至12GB/10日* **香港及澳門** 流動數據
HK & Macau data entitlement: 12GB/10-Day*
- 無限csf Wi-Fi 及 香港通話分鐘
Unlimited csf Wi-Fi & voice minutes in HK

*優惠期內啟動「香港任縱橫儲值卡」，即升級至10天共12GB 港澳流動數據及無限香港本地通話。優惠期有限，受有關條款及細則約束，詳情：
<https://www.hkcsf.com/tc/discover-hk-tourist-prepaid-sim/>

*Customer can get 12GB mobile data in 10-day in HK & Macau, and unlimited voice minutes in Hong Kong. The promotion is available for a limited time only.
Terms & Conditions apply. Detail: <https://www.hkcsf.com/en/discover-hk-tourist-prepaid-sim/>

CLUB Sim

無合約期!
NO contract period!

你可以用App自助開台，月費低至HK\$58!
送額外5GB本地數據*!
You can use App to self-open, monthly fee as low as HK\$58!
Get extra 5GB local data*!

有效期間及條款及細則請參閱
Validity period and Terms & Conditions apply

5日盡情用旅遊數據*卡 (中國台灣) Five Days Unlimited Travel Data* Card (Taiwan, China)

- ✓ 用足24小時，用唔囉嘅日數留返下次再用*
Keep any unused entitlement for your next trip.
Each day pass provides 24 hours' service*
- ✓ 全新Club Sim用戶送額外2日旅遊數據!
Extra TWO days' travel data for new Club Sim users.*
- ✓ 即插即用
Ready for instant use

限定優惠
Limited Offer

HKD 40

有效期至* **31/12/2023**
Expiry date*

* 每日數據漫遊用量到達500MB後，有關速度上限為256kbps
^ Club Sim免費服務組合只適用於全新Club Sim 客戶。服務條款及細則請參閱
<https://www.clubsim.com.hk/web/welcome-desk>
@ 當您到達指定漫遊地區時24小時通行將會自動啟動。自啟動起有效24小時。
收費以每一日，每個漫遊地區計算。
須於有效期內使用。

* When your data roaming usage reached 500MB, the data transmission speed will be capped at 256kbps for that day.
^ Free Welcome Pack from Club Sim is only applicable to new Club Sim user, please visit <https://www.clubsim.com.hk/web/welcome-desk> for Terms and Conditions.
@ Your 24-hour Pass will automatically be activated upon your arrival at the applicable destination and is valid for 24 hours after activation. Charges are calculated per one day per each applicable destination.
Must be used within validity period.

想坐得更舒適？

WANT TO TRAVEL MORE COMFORTABLY?



前排座位
Upfront Seats



方便快捷地落機

Disembark from aircraft conveniently

HKD 145

緊急出口行
Emergency Exit Rows



第一行
Row 1

享受額外伸展空間

Stretch out in extra comfort

HKD 260

請即向機艙服務員查詢座位位置及座位升級選項事宜。

Please inquire with our cabin crew regarding seat locations and available upgrade options now.

最快30分钟 快船直达内地*

30MINS* CONNECT HONG KONG AND MAINLAND CHINA

We Help ...

- ✓ 转运飞机行李
Transfer your check-in baggage
- ✓ 无需入境香港
Without go through HK immigration

我们的目的地
Our Destination

- ✓ 深圳蛇口港
ShenZhen Shekou 30mins
- ✓ 深圳机场码头
ShenZhen Airport 50mins
- ✓ 东莞虎门港
DongGuan Humen 90mins

了解更多

To know more...

抵港后前往香港国际机场E2
转船柜台（无需入境香港）
Hong Kong International Airport
Arrival Hall E2 counter
(before HK immigration)

服务时间 Service Hour
*06:15-21:15

- ✓ 广州琶洲港
GuangZhou Pazhou 120mins
- ✓ 中山港
ZhongShan Port 70 mins



CKS

*航班时间受天气及海面状况影响，实际航班时间仅供参考。
Ferry time are subject to change due to weather and sea conditions.

我們接受以下付款方式。

We accept the following payment options for purchases.

信用卡 Credit Card



最高限額 Credit Limit:

HKD 2,000

八達通 Octopus Card



最高交易金額 Transaction Limit:

HKD 1,000

圖片僅供參考，一切以實物為準。| 在飛機上請勿進食外來食物及飲品。| 所有供應需視乎情況而定，亦可能會作出更改而不另行通知。詳情請與機艙服務員查詢。| 食物成分可能含有堅果類、麩質、海鮮、蛋、奶製品等致敏原。| 法例嚴禁未達法定年齡人士飲用任何酒精類飲品。

Pictures are for illustrative purposes only, please regard the actual product as the definitive version. | No outside food or beverages to be consumed onboard. | All items are subject to availability and may change without prior notice. For details, please approach our cabin crew. | Food may contain traces of nuts, gluten, seafood, eggs and/or dairy products allergens. | Consumption of alcohol under the legal age is prohibited by law.

提前網上預訂，盡享更多滿足滋味！

PRE-ORDER ONLINE FOR MORE OPTIONS!



以下餐點只供網上預訂。The following meals are available for pre-bookings only.



立即掃描二維碼預訂心儀美食於機上享用！於初次預訂機票時加購指定餐點，可享高達**75折**折扣優惠！
Scan the QR code and reserve your favourite meal! Enjoy savings of **up to 25%** on selected meals when making initial flight booking!



鹹蛋黃蒸肉餅飯
Steamed Minced Pork with
Salted Egg on Rice



荷香珍珠雞餅特選點心
Sticky Rice with Chicken in
Lotus Leaf with Cantonese Dim Sum



日式胡麻醬仿蟹柳冷拌烏冬
Kanikama and Udon with
Japanese Sesame Dressing



臘味冬菇糯米飯
Glutinous Rice with
Chinese Sausages and Mushroom



黑松露野菌意粉
Truffle Mushroom Pasta



港式咖哩魚蛋
HK Style Curry Fish Balls



特色芝士熱狗
Grilled Cheese Hot Dog



秘製港式咖喱牛腩飯
HK Style Beef Brisket Curry with Rice